

Local Electoral Area Boundary Committee 2018

County Wicklow

William Winters 18 February 2018

1.0 Executive Summary

The names and number of the five Municipal Districts in County Wicklow should remain the same. However, in line with the Terms of Reference (ToR), the boundaries should be refined to facilitate better local Government and Municipal Districts shall consist of one or more local electoral areas where appropriate or required by the ToR.

Municipal District	2014 seats	2019 seats	LEAs	2019 seats
Arklow	6	6	Single LEA	6
Baltinglass	6	5	Single LEA	5
Bray	8	8	Bray Central	4
			Bray Environs	4
Greystones	6	6	Single LEA	6
Wicklow	6	7	Single LEA	7
Total Seats	32	32	Total Seats	32



Figure 1: Proposed Municipal Districts and LEAs

2.0 Detailed Proposal

2.1 Arklow Municipal District (6 seats)

Transfer the following Electoral Districts (EDs) from Baltinglass Municipal District to Arklow Municipal District: *Aghowle, Ballinglen, Ballybeg, Carnew, Coolattin, Coolboy, Cronelea, Killinure, Money, Rath, Shillelagh, and Tinahely.*

Transfer the following EDs from Arklow Municipal District into Wicklow Municipal District: *Knockrath, Ballinderry, Rathdrum, Dunganstown West, Dunganstown East.*

2.2 Baltinglass Municipal District (5 seats)

In accordance with article 6 of the terms of reference, the area should be reduced in size to avoid designating local electoral areas which are territorially very large or extend over very long distances. It is over 60km from end to end of the existing Municipal District, and in between, County Carlow separates Baltinglass from the southern settlements of Carnew, Tinahely and Shillelagh. In accordance with article 7(iv) I propose that exceptional circumstances exist for the creation of a single local electoral area with 5 members by transferring the following EDs from Baltinglass Municipal District to Arklow Municipal District: *Aghowle, Ballinglen, Ballybeg, Carnew, Coolattin, Coolboy, Cronelea, Killinure, Money, Rath, Shillelagh, and Tinahely.*

The remaining EDs from Baltinglass up to Blessington will form the new 5-member Baltinglass Municipal District. This will restore the old LEA which existed up until 2014, with the addition of Coolballintaggart. With a variance of -12% this LEA is slightly outside the guideline variance of plus or minus 10%. However, it is important to note that article 2 says the variance of 10% should apply "*as far as practicable and subject to the other requirements of these terms of reference*". In this instance, I believe that the relative isolation of West Wicklow from the rest of the county provides exceptional circumstances for the creation of a 5 member Municipal District. There is a precedent for this approach. Below is an extract from page 150 from the Electoral Area Boundary Report 2008.

The Baltinglass electoral area is a three seater and was reviewed by the Committee in line with the terms of reference. Having considered a range of other options, the Committee is satisfied that very exceptional circumstances justifying the continuation of a three seat electoral area exist in this case. West Wicklow faces away from the rest of the county. In addition to this, the electoral divisions in the Wicklow mountains are sparsely populated and a large area would be required to make up the population necessary to support a fourth seat in Baltinglass. This would involve undue encroachment on one or more of the three neighbouring electoral areas of Bray, Wicklow or Arklow which are each individually based around their own strong communities and natural hinterlands and, as evident from the table above, currently enjoy closely balanced representation. An expanded Baltinglass electoral area would also be disproportionately large and would contain areas with links away from Baltinglass. The Committee is satisfied therefore to recommend that Baltinglass electoral area be retained as a three seater.

Figure 2 - Extract from the Electoral Area Boundary Report 2008 in relation to Baltinglass LEA.

2.3 Bray Municipal District (8 seats)

I recommend that there is no change to the Bray Municipal District Boundary. The current boundary works well and encompasses the town and its natural hinterland. In accordance with article 3 the number of councillors assigned to a local electoral area shall be not less than 5 and not more than 7, provided that in particular compelling circumstances 3 or 4 seat local electoral areas may be recommended. Therefore, to maintain the existing Municipal boundary, I propose that in accordance with article 7(iii), the Municipal District is divided into two local electoral areas as the Committee considers appropriate.

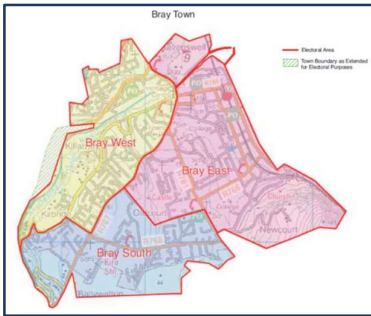
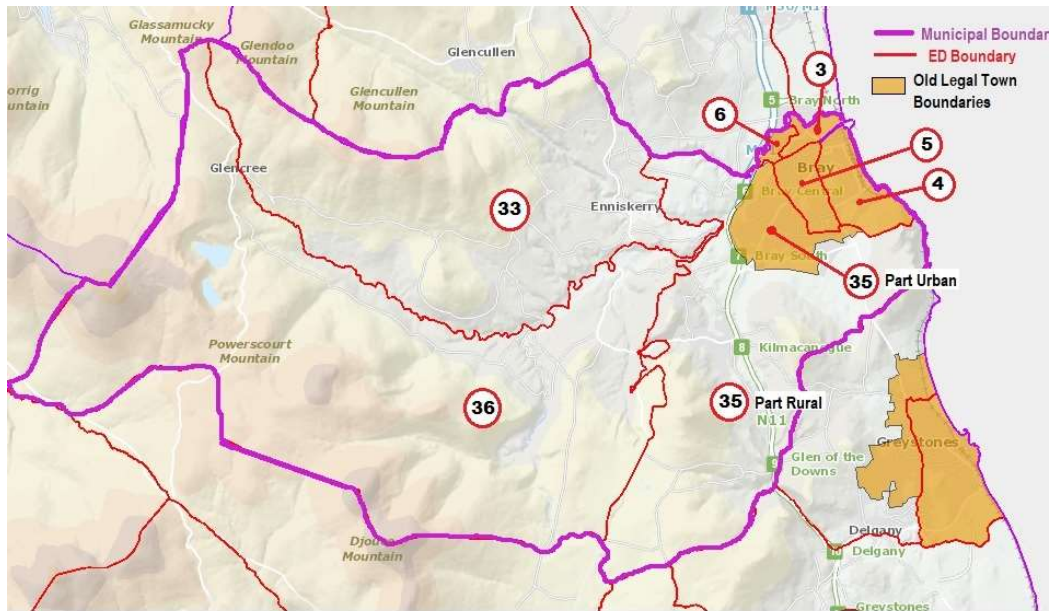


Figure 3 Bray Town Council Wards 2008

There is nothing new to this approach. The old Bray Town Council was divided into 3 wards consisting of Bray East, Bray West, and Bray South.

To assist the Committee with choosing the most appropriate boundaries, below is a current map of the Bray Municipal District with ED populations.

I propose two wards of 4 seats each, called Bray Central and Bray Environs. Detailed calculations are provided in Section 3 of this submission.



C. Wicklow Population Change 2011 -2016 - persons (Number) by Electoral Division and Year

ID	Co. Wicklow Electoral Divisions	Municipal District 2014	2011	2016(P)	Change	+/- %
003	Bray No. 1	Bray	1,746	1,845	99	5.7%
004	Bray No. 2	Bray	6,192	6,410	218	3.5%
005	Bray No. 3	Bray	6,424	6,481	57	0.9%
006	Rathmichael (Bray)	Bray	2,380	2,418	38	1.6%
033	Enniskerry	Bray	2,765	2,894	129	4.7%
035	Kilmacanoge (Part Urban)	Bray	10,068	10,606	538	5.3%
035	Kilmacanoge (Part Rural)	Bray	3,975	4,088	113	2.8%
036	Powerscourt	Bray	785	788	3	0.4%

Figure 4 - Bray Municipal District with ED populations.

2.4 Greystones Municipal District (6 seats)

No change to existing boundaries and retain single LEA of 6 seats.

2.5 Wicklow Municipal District (7 seats)

Transfer the following EDs from Arklow Municipal District into Wicklow Municipal District: Knockrath, Ballinderry, Rathdrum, Dunganstown West, Dunganstown East.

This will return Rathdrum and Dunganstown into their natural hinterland of Wicklow town and create a 7 seat Municipal District with a single LEA.



Figure 5 - Proposed Municipal Districts and LEAs

3.0 Detailed Calculations

Proposed County Wicklow Municipal Districts 2019			
		Number of Council Seats:	32
		Population of County Census 2016:	142,332
		Average population / Councillor:	4,448
Arklow 6 Seats - (Single Local Electoral Area)			
Population of existing Electoral Area			26,178
add Carnew /Tinahely area from Baltinglass			6,627
Subtract Rathdrum /Dunganstown area. Move to Wicklow			-4,599
			28,206
seats warranted (4,448 per seat)			6.34
proposed seats			6
variance			5.7%
Baltinglass 5 seats - (Single Local Electoral Area)			
Population of existing Electoral Area			26,143
Subtract Carnew /Tinahely area. Move to Arklow			-6,627
			19,516
seats warranted (4448 per seat)			4.39
proposed seats			5
variance			-12.2%
Bray 8 seats - (Two Local Electoral Areas of 4 seats)			
Population of existing Electoral Area			35,530
seats warranted (4448 per seat)			7.99
proposed seats			8
variance			-0.1%
WARD 1	Bray No. 1 (Little Bray)	1,845	
	Bray No. 2 (East)	6,410	
	Bray No. 3	6,481	
	Rathmichael (Bray)	2,418	
WARD 2	Enniskerry		2,894
	Kilmacanoge (Part Urban)		10,606
	Kilmacanoge (Part Rural)		4,088
	Powerscourt		788
		17,154	18,376
seats warranted (4448 per seat)		3.86	4.13
proposed seats		4	4
variance		-3.6%	3.3%
Greystones 6 seats- (Single Local Electoral Area)			
Population of existing Electoral Area			26,311
seats warranted (4448 per seat)			5.9
proposed seats			6
variance			-1.4%
Wicklow 7 seats- (Single Local Electoral Area)			
Population of existing Electoral Area			28,170
Add Rathdrum/Dunganstown area from Arklow			4,599
			32,769
seats warranted (4448 per seat)			7.4
proposed seats			7
variance			5.2%

4.0 Population Data with Electoral District ID Map

C. Wicklow Population Change 2011 -2016 - persons (Number) by Electoral Division and Year

ID	Co. Wicklow Electoral Divisions	Municipal District 2014	2011	2016(P)	Change	+/- %
001	Arklow No. 1 Urban	Arklow	9,817	9,956	139	1.4%
002	Arklow No. 2 Urban	Arklow	2,953	3,011	58	2.0%
003	Bray No. 1	Bray	1,746	1,845	99	5.7%
004	Bray No. 2	Bray	6,192	6,410	218	3.5%
005	Bray No. 3	Bray	6,424	6,481	57	0.9%
006	Rathmichael (Bray)	Bray	2,380	2,418	38	1.6%
007	Wicklow Urban	Wicklow	6,761	6,752	- 9	-0.1%
008	Ballinguiile	Baltinglass	138	136	- 2	-1.4%
009	Baltinglass	Baltinglass	2,614	2,696	82	3.1%
010	Blessington	Baltinglass	4,399	4,607	208	4.7%
011	Burgage	Baltinglass	1,786	2,063	277	15.5%
012	Donaghmore	Baltinglass	396	429	33	8.3%
013	Donard	Baltinglass	508	522	14	2.8%
014	Dunlavin	Baltinglass	1,327	1,355	28	2.1%
015	Eadestown	Baltinglass	201	196	- 5	-2.5%
016	Hartstown	Baltinglass	276	272	- 4	-1.4%
017	Hollywood	Baltinglass	727	770	43	5.9%
018	Humewood	Baltinglass	304	318	14	4.6%
019	Imael North	Baltinglass	235	257	22	9.4%
020	Imael South	Baltinglass	254	251	- 3	-1.2%
021	Kilbride	Baltinglass	975	968	- 7	-0.7%
022	Lackan	Baltinglass	743	812	69	9.3%
023	Lugglass	Baltinglass	155	166	11	7.1%
024	Rathdangan	Baltinglass	445	459	14	3.1%
025	Rathsallagh	Baltinglass	269	293	24	8.9%
026	Stratford	Baltinglass	430	459	29	6.7%
027	Talbotstown	Baltinglass	395	413	18	4.6%
028	The Grange	Baltinglass	419	432	13	3.1%
029	Tober	Baltinglass	524	514	- 10	-1.9%
030	Togher	Baltinglass	332	342	10	3.0%
031	Tuckmill	Baltinglass	246	294	48	19.5%
032	Delgany	Greystones	5,652	5,983	331	5.9%
033	Enniskerry	Bray	2,765	2,894	129	4.7%
034	Greystones	Greystones	7,151	7,259	108	1.5%
035	Kilmacanoge (Part Urban)	Bray	10,068	10,606	538	5.3%
035	Kilmacanoge (Part Rural)	Bray	3,975	4,088	113	2.8%
036	Powerscourt	Bray	785	788	3	0.4%
037	Altidore	Wicklow	363	363	0	0.0%
038	Arklow Rural	Arklow	1,310	1,386	76	5.8%
039	Aughrim	Arklow	1,760	1,860	100	5.7%

040	Avoca	Arklow	682	739	57	8.4%
041	Ballinaclash	Arklow	636	638	2	0.3%
042	Ballinacor	Arklow	309	346	37	12.0%
043	Ballinderry	Arklow	459	467	8	1.7%
044	Ballyarthur	Arklow	1,024	1,101	77	7.5%
045	Ballycullen	Wicklow	269	333	64	23.8%
046	Brockagh	Wicklow	776	739	- 37	-4.8%
047	Calary	Wicklow	302	332	30	9.9%
048	Cronebane	Arklow	478	465	- 13	-2.7%
049	Dunganstown East	Wicklow	764	842	78	10.2%
050	Dunganstown South	Arklow	840	902	62	7.4%
051	Dunganstown West	Arklow	453	450	- 3	-0.7%
052	Ennereilly	Arklow	382	411	29	7.6%
053	Glendalough	Wicklow	268	282	14	5.2%
054	Glenealy	Wicklow	2,750	2,750	0	0.0%
055	Kilbride	Arklow	909	892	- 17	-1.9%
056	Kilcoole	Greystones	9,834	10,730	896	9.1%
057	Killiskey	Wicklow	1,038	1,046	8	0.8%
058	Knockrath	Arklow	239	246	7	2.9%
059	Moneystown	Wicklow	303	301	- 2	-0.7%
060	Newcastle Lower	Greystones	2,209	2,339	130	5.9%
061	Newcastle Upper	Wicklow	3,584	4,004	420	11.7%
062	Oldtown	Wicklow	583	613	30	5.1%
063	Rathdrum	Arklow	2,448	2,534	86	3.5%
064	Togher	Wicklow	1,204	1,382	178	14.8%
065	Trooperstown	Wicklow	348	336	- 12	-3.4%
066	Wicklow Rural	Wicklow	7,429	8,095	666	9.0%
067	Aghowle	Baltinglass	213	238	25	11.7%
068	Ballingate	Baltinglass	398	403	5	1.3%
069	Ballinglen	Baltinglass	230	211	- 19	-8.3%
070	Ballybeg	Baltinglass	201	184	- 17	-8.5%
071	Carnew	Baltinglass	1,759	1,708	- 51	-2.9%
072	Coolattin	Baltinglass	290	278	- 12	-4.1%
073	Coolballintaggart	Baltinglass	461	492	31	6.7%
074	Coolboy	Baltinglass	546	585	39	7.1%
075	Cronelea	Baltinglass	190	175	- 15	-7.9%
076	Kilballyowen	Arklow	345	346	1	0.3%
077	Killinure	Baltinglass	340	334	- 6	-1.8%
078	Kilpipe	Arklow	406	428	22	5.4%
079	Money	Baltinglass	149	146	- 3	-2.0%
080	Rath	Baltinglass	261	277	16	6.1%
081	Shillelagh	Baltinglass	595	586	- 9	-1.5%
082	Tinahely	Baltinglass	1,536	1,502	- 34	-2.2%
Totals			136,640	142,332	5,692	4.2%

County Wicklow ED's and Electoral Areas

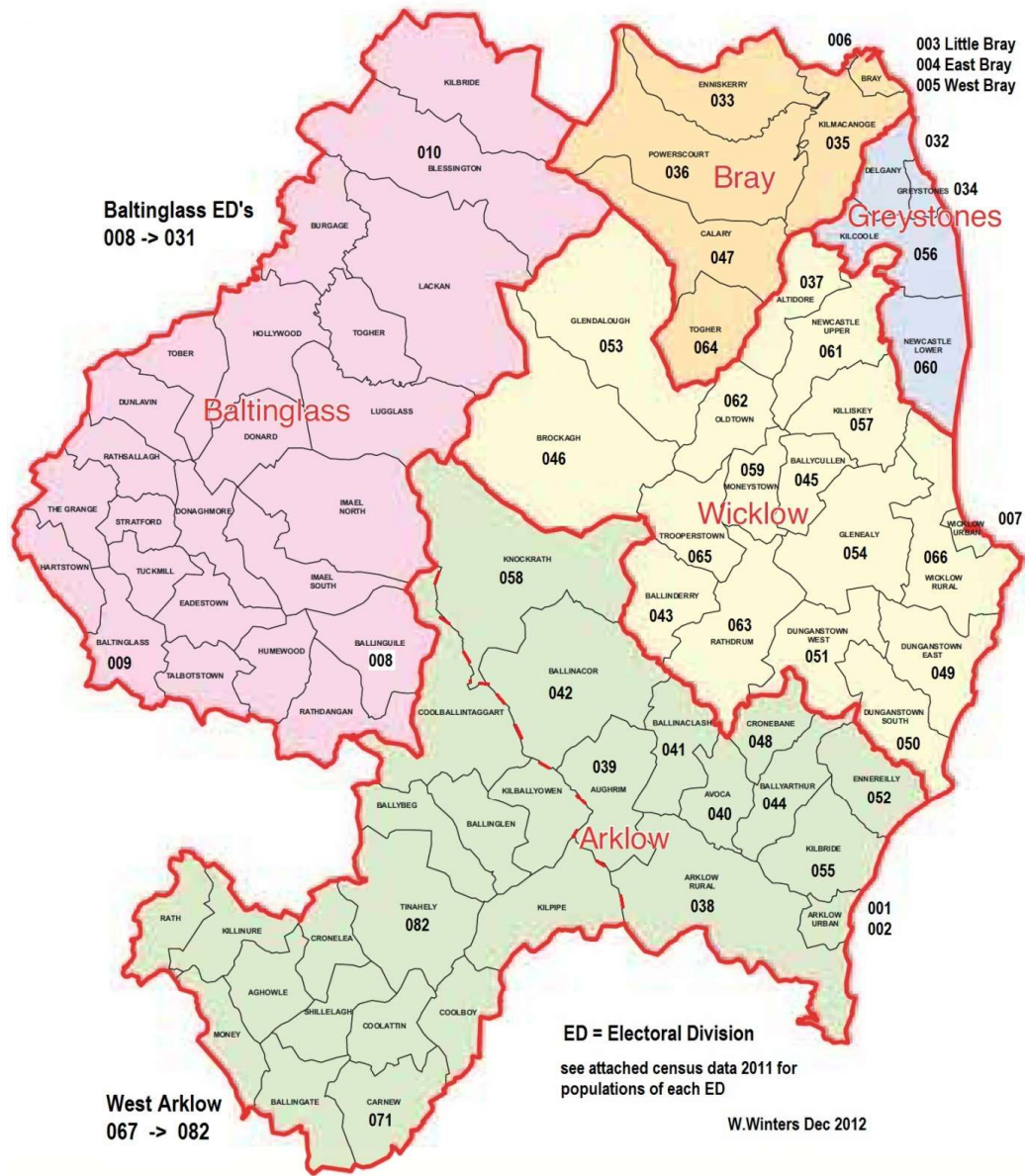


Figure 6 - LEA boundary map 2008 with Electoral District ID numbers.